

Gamma+



XCELL S Soul Fusion

Two souls become one to give birth to a one of its kind hairdryer!

Create your own style and express yourself with Xcell S.

Xcell S is the new professional hairdryer of a new generation. It features our G-TRON motor: 120.000 RPM for extreme high pressure and the best performances ever. The new nozzle coupling system increases air flow and produces a faster drying. Xcell S is super quiet: the internal sponge filter absorbs noise.

www.gammapiu.it

Gamma+

XCELL S



Designed, assembled and tested in Italy.


XCELL S

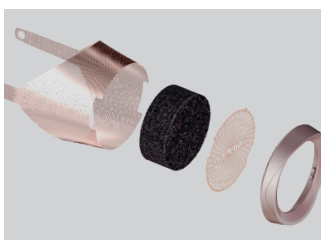
Create your own style and express yourself with Xcell S

- + New design with optimised nozzle coupling system that increases and improves the outflow of air.
- + Triple protection filter with removable rear grill for easy daily cleaning and maintenance, ensuring maximum performance and longer motor life.
- + Long-life 120,000 rpm G-TRON digital motor.
- + Customisable side filter and rear grill in different colour combinations.
- + Designed to save energy: uses only the energy needed, avoiding any waste.
- + Ion technology: reduces frizz and makes hair shiny.
- + Button lock and recessed cold air blow to avoid undesired changes.
- + 4 nozzles included for each hair/beard type and 1 specific diffuser.
- + Set of exclusive accessories included.

Code	gold rose PAGAMXCESGE265
	matt black PAGAMXCESGE242
Pressure	60 mbar
Watt	1400-1600 W
Voltage	220-240 V
Weight	290 g
Noise	63,8 dB

Registered Design

 Master Carton Qty 3 units
1,5 kg. | 40,5x25,5x29,2 cm



Gamma Più s.r.l

Via Caduti del Lavoro, 22
25046 Cazzago S. Martino (BS) Italia

Tel. +39.030.77.50.207 - 77.50.077
Fax. +39.030.72.54.999 - 77.50.206

info@gammapiu.it
www.gammapiu.it

